

Access audit at Veterans bowling Pavilion, Moorside Park, Victoria Lane, Swinton

Conducted on 30th April 2014

Access 2 all Areas representatives: Andy Roberts; Lillian and Roy Jenson; Elaine Barber and Tommy Healey, Elaine Barber, Neville Gregory, Greg

Introduction: Access 2 All Areas were invited to conduct an audit at the veterans bowling pavilion, Moorside Park, Victoria Lane, Swinton

Tommy is a wheelchair user, Neville uses a mobility scooter and Roy and Greg have mobility difficulties.

Car park

The car park to the facility is not surfaced with tarmac but it was relatively smooth for our members using a wheelchair and mobility scooter. There was no lighting which may be a problem in the evenings.



Path to Bowling Green

The path had a big grid/drain/hole about one foot across which someone could easily fall down, particularly if it was dark.

Entrance to the pavilion

The pavilion entrance was very difficult for wheelchair users to use as it had a lip that would be extremely difficult to get over unassisted (see below):



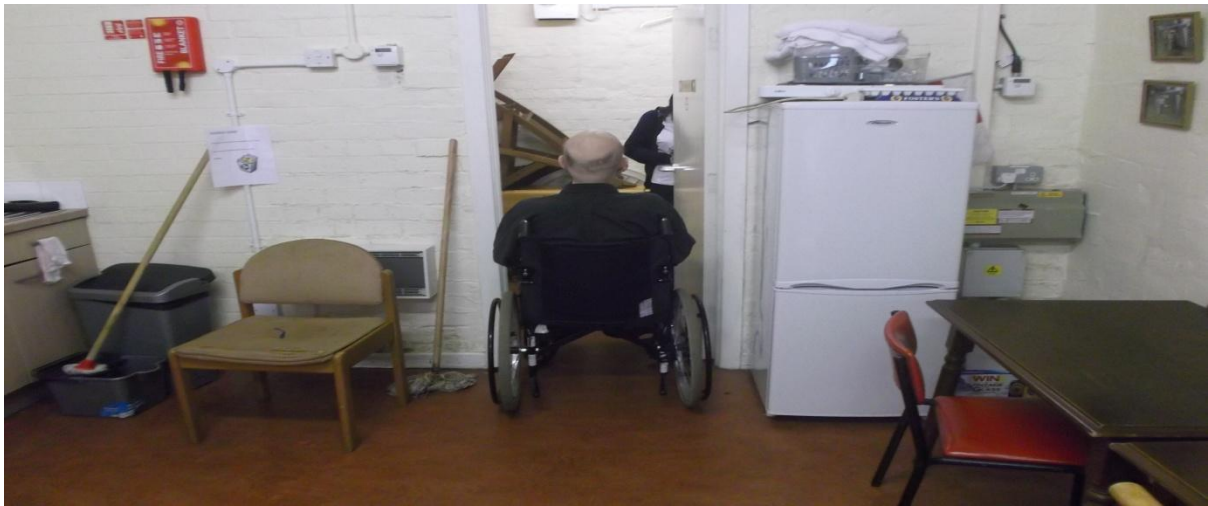
Lip at entrance

Inside the pavilion

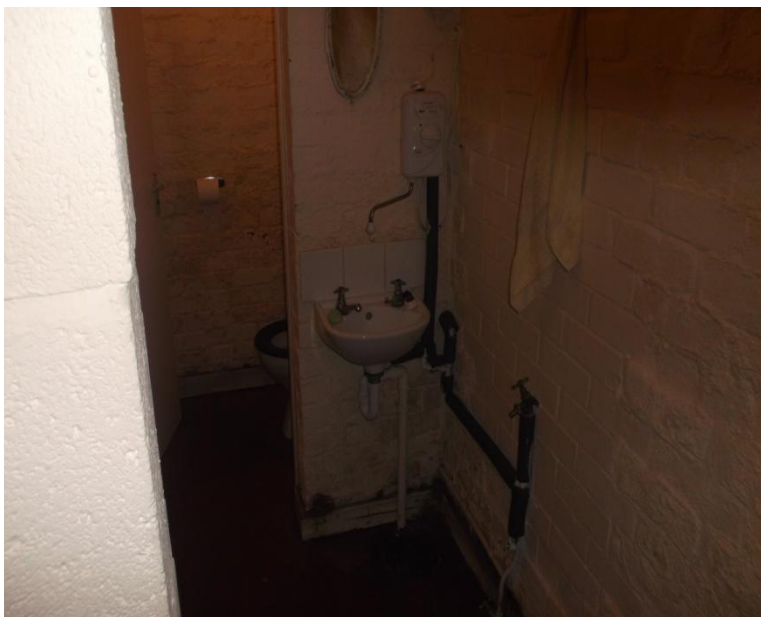
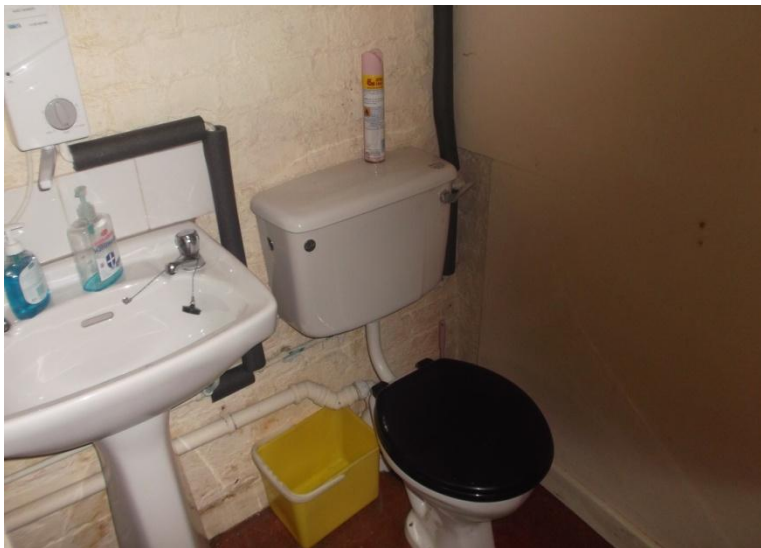
The pavilion had obviously not been updated for some time. It was quite cluttered and wheelchair users had little room to manoeuvre. The kitchen facilities were not accessible to wheelchair users who would need a lower counter top. The fire blanket was too high up on the wall for wheelchair users or anyone of a smaller stature



The entrance to the toilet was too narrow for wheelchair users to access:



There were no disabled toilets.



Access to the green

The access to the green was via a short section of steps. This would be impossible for unassisted wheelchair users (See below). We were told that there was another access point through a gate but there was no signage to indicate this. The gate was locked when we were there.



To get on to the green itself there was a moat that runs all the way around. Wheelchair users would not be able to use the facility without some kind of ramp. The path around the green was accessible.



Moat

Recommendations

This facility does not seem to be compliant with the Equality Act 2010. It is an old building which is in desperate need of being made inclusive. Wheelchair users would not be able to use this facility without considerable assistance. Our members were felt that the facilities were old fashioned and did not make any concession for anyone who has a disability.

Specific recommendations:-

- Ideally a smooth wheelchair friendly ramp to get down from the clubhouse and on to the bowling green. Alternatively signage to entrance gate, ensuring not locked when people need access

- A temporary ramp to cover the moat so that wheelchair users could access the green
- Cover for drain/grid/ hole on path
- Small ramp into Pavillion building
- Accessible toilet
- Accessible kitchen facilities
- Fire blanket in position accessible to all

Considerable investment is required in order to bring the facilities in line with basic legal requirements. The group urges the Council to make investment in this pavilion.